

PLM REFERENCES

Reichle & De-Massari (R&M)

■ Project information

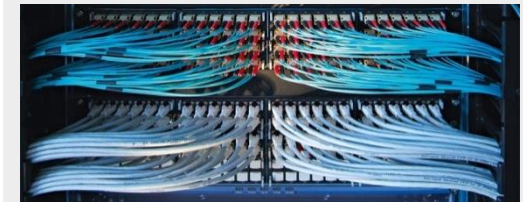
- Global CAD/CAM, PDM, SAP integration concepts
- Development and production at external site
- Product structures

■ Services Intelliact AG

- Concept for global PLM processes (2007)
- Analysis of the current PLM implementation (TeamCenter) (2010)
- Concept for TC/SAP interface (2011)
- Concepts for managing products and product structure in TC/SAP (2012)
- Development of a guideline for product structures
- Documentation of PDM-ERP interface (2012)

■ Involved partners

- Siemens PLM
- SAP



About the client

- Information and communications technology
- 724 employees
- 183,6 Mio. CHF revenue (2012)