

PLM REFERENCES

Robatech

■ Project information

- Introduction of PLM system and integration into existing ERP system
- Foundation for development of configurable product structures

■ Services Intelliact AG

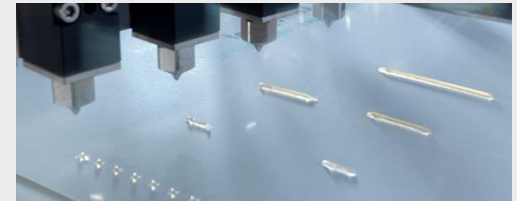
- Definition of 5 year PLM roadmap based on analysis of product structures and their landscape. Commitment of top management to the roadmap (2010)
- Overall concept and use case definition for future structure handling and development processes (2011)
- Evaluation and selection of PLM system based on use cases and a good match of supplier to Robatech (2012)
- Specification and introduction of solution: Time to market of 9 months, both parties (Intelliact and PLM supplier) under budget (2013)

■ Involved Partners

- Contact Software GmbH
- Asseco Solutions

Robatech

Gluing Technology



About the client

- Gluing technology systems for packaging, converting, graphics, hygienic, textile, woodworking, construction, automotive and various other industries
- 150 employees
- 61 Mio. CHF revenue (2012)